



JOTUN

Jotamastic

SMART PACK

Simply better corrosion protection
with brush & roller application





LONGER LASTING PROTECTION

The best protection by brush & roller application

Coatings designed for airless spray application are often used for smaller maintenance jobs using brush or roller. In these situations long-lasting protection will not be obtained due to brush strokes and low film thickness.

Jotamastic Smart Pack has been developed to provide excellent film formation and build the film thickness required to provide long-lasting protection.

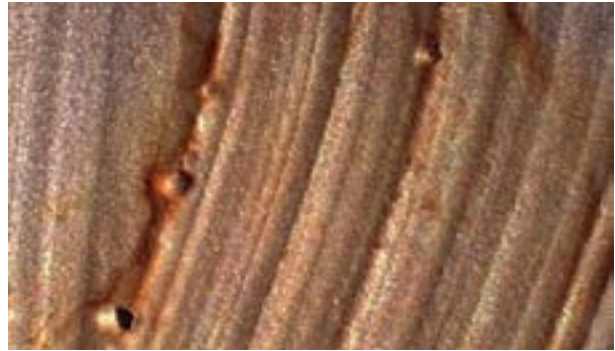
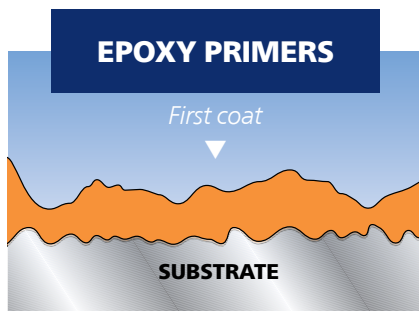
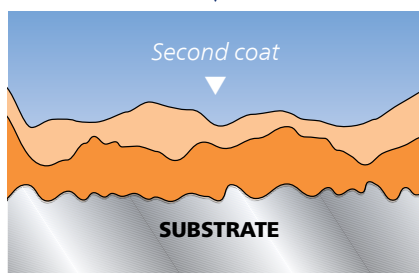


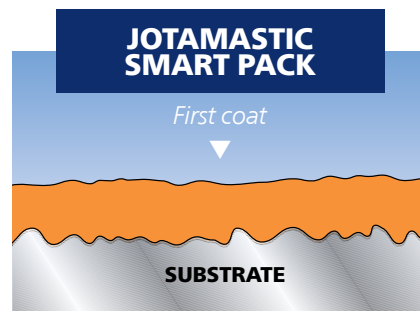
Image shows magnification of a conventional epoxy primer that is starting to corrode on the valleys of the brush strokes, where the film thickness is low.



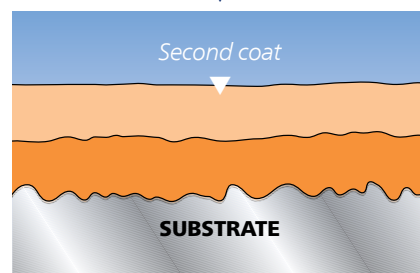
Uneven thickness = poor protection



Poor flow properties = uneven film thickness – valleys between brush marks



Even thickness = better protection



Better flow properties = smoother, better protective film



LONGER MAINTENANCE INTERVALS

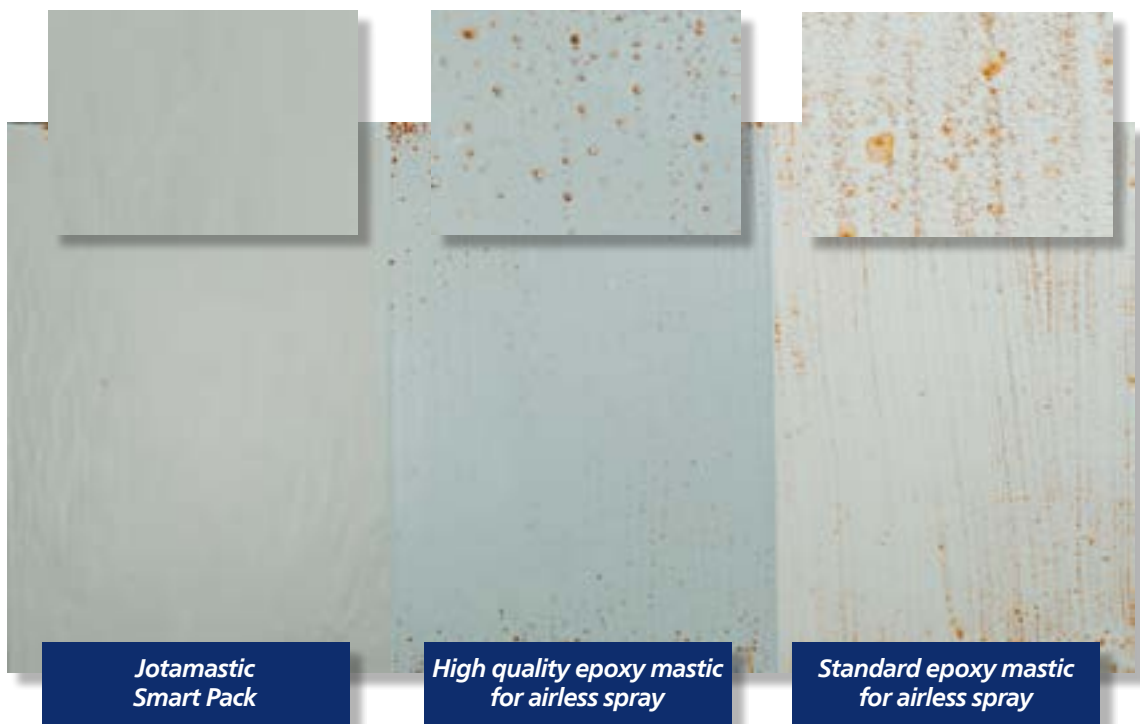
Tailor-made for brush and roller application

For more than 25 years, the Jotamastic range of coatings has been consistently developed to incorporate the most advanced epoxy mastic technology.

Jotun identified optimum flow characteristics (known as the science of rheology) as the key

to meeting the challenge for a maintenance anticorrosive coating for brush and roller application.

The result is Jotamastic Smart Pack which delivers a smooth and consistent protective film. The required film thickness can easily be achieved thus resulting in longer lasting corrosion protection.



Panels in the above image are applied with brush and exposed for 7 days in an accelerated salt spray test.



Jotamastic Smart Pack will ensure the lasting protection of edges and difficult to reach areas.



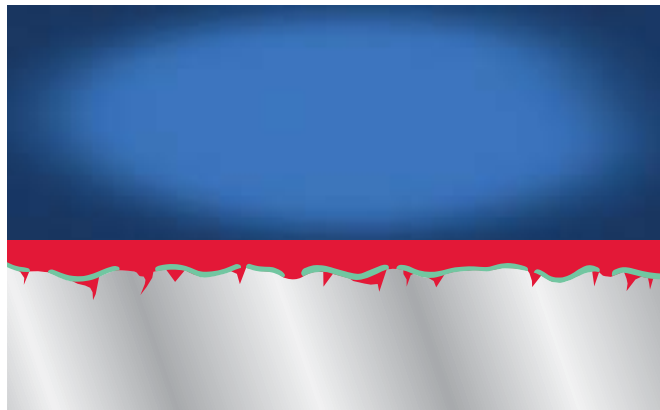
SAVE TIME AND MONEY

Well proven epoxy mastic technology with a track record of success over more than 25 years

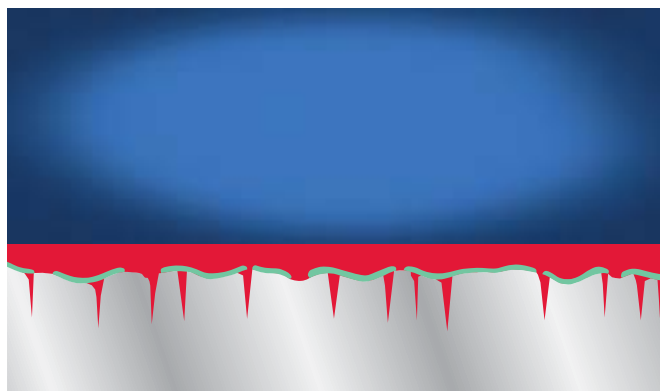
SIMPLER SURFACE PREPARATION

Surface preparation represents a large share of the overall cost in a maintenance situation.

- No blast cleaning required, reducing time and cost with no compromise in protection
- Can be applied on most clean and sound surfaces
 - reducing downtime
- A solution for difficult to reach areas, where good surface preparation is not possible or desirable
- Compatible with most generic types of coatings



Enlarged section through the coated substrate shows Jotamastic Smart Pack penetrating down into the aged surface.



This section shows how Jotamastic Smart Pack, having penetrated deep into the substrate, converts from a liquid coating into a solid film.



REDUCE WASTE

Mix only what you need

For a brush and roller applied maintenance coating, two features were requested by our customers:

- Easy to use – reducing risk of mistakes
- Easy to mix the correct amount for the job – reducing waste

Jotamastic Smart Pack fulfils these requirements in addition to being easy to handle and store, resulting in reduced inventory and waste.

Jotamastic Smart Pack is supplied:

- In two 5 litre tins
- With a 1:1 mixing ratio
- With the lid on each tin clearly marked with red and blue in order to reduce risk of mistakes

Simply mix equal amounts in the quantity required for the specific job and start applying.

1:1 mixing ratio



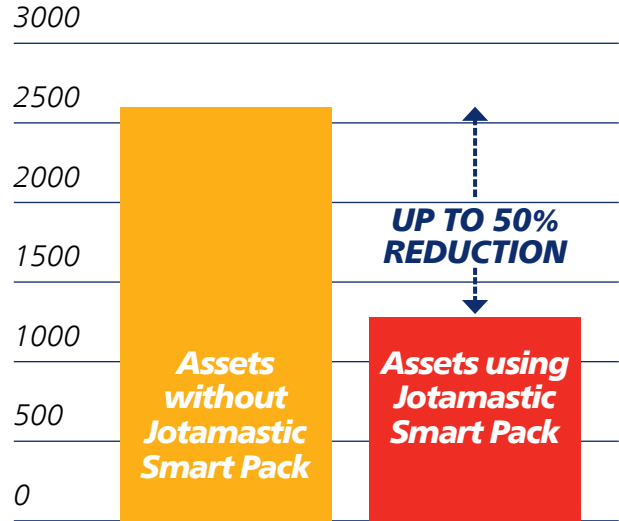


UP TO 50% REDUCTION IN PAINT CONSUMPTION

Following the launch of Jotamastic Smart Pack, continuous large scale analysis has been carried out monitoring the effect of converting to Jotamastic Smart Pack.

The data shows that clients converting to Jotamastic Smart Pack have reduced their consumption of maintenance paint by up to 50% and cost by approximately 25%.

*Analysis of maintenance paint consumption
Litres consumed per year*

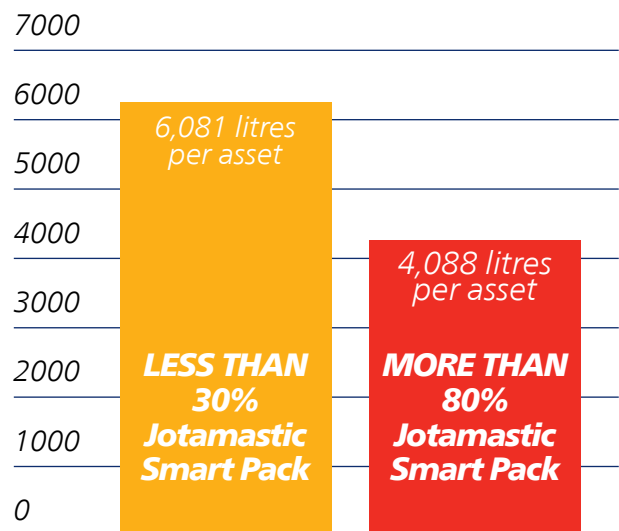


Comparable in size, age and type

CASE STORY

An oil major has compared two groups of vessels, the first group is using small amounts of Jotamastic Smart Pack and the second group is using Jotamastic Smart Pack as their main maintenance primer (more than 80% of primer usage is Jotamastic Smart Pack). In the graph you can see that the second group has a total maintenance paint consumption which is 33% lower than the first group. This is mainly caused by the effect of using Jotamastic Smart Pack as their main maintenance primer.

*Oil major's vessels
Litres consumed over a 3 year period*



*Jotamastic Smart Pack as a share
of total anticorrosive usage*

Marine and protective coatings offices worldwide

Legal Jotun entities world wide are listed. For details of Branch offices and Jotun representation in countries not listed, please visit jotun.com

AUSTRALIA

Jotun Australia Pty. Ltd.,
P.O. Box 105, Altona North,
9 Cawley Road,
BROOKLYN, VIC 3025
Tel: +61 3 9314 0722
Fax: +61 3 9314 0423

BRAZIL

Jotun Brasil Ltda.
Av Santa Luzia, 2084 - Santa Luzia
24.722-315 São Gonçalo
RIO DE JANEIRO
Tel: +55 21 3147 3850
Fax: +55 21 3147 3861

P.R. of CHINA

Jotun Coatings (Zhangjiagang) Co. Ltd.
Jotun COSCO Marine Coatings
(Qingdao) Co. Ltd.
Floor 20, Jiu Shi Mansions,
No. 28 Zhong Shan Road (South)
SHANGHAI 200010
Tel: +86 21 6333 080 0
Fax: +86 21 6326 968 6

Jotun Coatings (Zhangjiagang) Co. Ltd.
Jotun COSCO Marine Coatings
(Qingdao) Co. Ltd.
Room 709-12, Goldlion Digital Network
Centre, 138 Tiyu Road East,
GUANGZHOU, 510620
Tel: +86 20 38 78 07 49
Fax: +86 20 38 78 19 66

HONG KONG

Jotun COSCO Marine Coatings (H.K.) Ltd
Room 1208, 12/F, Stanhope House
734 King's Road, Quarry Bay
HONG KONG
Tel: +852 2527 6466
Fax: +852 2861 1307

DENMARK

Jotun Danmark A/S Jotun Coatings
Columbusvej 5, 2860 Søborg,
COPENHAGEN
Tel: +45 4492 9400
Fax: +45 4492 9401

EGYPT

El Mohandes Jotun S.A.E.
El Sheikh Aly Gad El Haq Street
Florida Mall,
Masaken Sheraton – 4th Floor
CAIRO
Tel: +20 2265 1800
Fax: +20 2265 1801

FINLAND

Nor-Maali OY
Vanhatie 20, 15240 LAHTI
Tel: +358 3 874 650
Fax: +358 3 874 6550

FRANCE

Jotun France S.A.
22/24 Rue du President Wilson, Bat.A
92300 LEVALLOIS PERRET
Tel: +33 1 4519 3882
Fax: +33 1 4519 3894

GERMANY

Jotun (Deutschland) GmbH
Haferweg 38
22769 HAMBURG
Tel: +49 40 851 960
Fax: +49 40 856 234

GREAT BRITAIN

Jotun Paints (Europe) Ltd.
Stather Road, Flixborough,
SCUNTHORPE DN15 8RR
Tel: +44 1724 400 000
Fax: +44 1724 400 100

GREECE

Jotun Hellas Ltd.
18, Vouliagmenis Avenue,
Glyfada
ATHENS 16675
Tel: +30 210 42 85 980-82
+30 210 42 86 035-37
Fax: +30 210 42 85 983/
+30 210 42 87 237

INDIA

Jotun India Pvt Ltd.
502, 5th Floor,
Boston House,
Suren Road,
Behind Cinemax Theatre,
Andheri East,
Mumbai – 400 093
Tel: +91 22 2822 4600
+91 22 2820 5900 (+fax)
Fax: +91 22 2820 5900

INDONESIA

P.T. Jotun Indonesia Paints and Chemicals
Kawasan Industri MM2100
Blok KK-1, Cikarang Barat
Bekasi 17520
Tel: +62 21 8998 2657
Fax: +62 21 8998 2658

IRELAND

Jotun (Ireland) Ltd.,
Unit K7, Marina Commercial Park,
Centre Park Road, CORK
Tel: +353 214 965955
Fax: +353 214 965992

ITALY

Jotun Italia S.P.A.
Via Petronio, 8, Zona Ind. Nogheno
34147 - MUGGIA (TRIESTE)
Tel: +39 040 23 98204
Fax: +39 040 23 98222

JAPAN

NKM Coatings Co., Ltd.
12-1, Minamirokugo 3-chome,
Ota-ku,
TOKYO 144-0045
Tel: +81 3 6758 2212
Fax: +81 3 6758 2213

KOREA (SOUTH)

Chokwang-Jotun Ltd.
30th Block Jisa Science Park,
1205 Jisa-dong, Gangseo-gu,
BUSAN 618-230
Tel: +82 517 976 000
Fax: +82 517 117 735

LIBYA

Jotun Libya J.S.Co
Almumtaz Co. S.A. (Jotun).
Aalsek Street
P.O. Box 6850
TRIPOLI
Tel: +218 214777811
Fax: +218 214780718

MALAYSIA

Jotun (Malaysia) Sdn. Bhd.
Lot 7 Persiaran Perusahaan,
Section 23, P.O. Box 7050
40700 SHAH ALAM
Tel: +60 351 235 500
Fax: +60 351 235 632

THE NETHERLANDS

Jotun B.V.
Postbus 208
3200 AE SPIJKENISSE
Visiting address:
Curieweg 11b, 3208 KJ Spijkenisse
ROTTERDAM
Tel: +31 181 678 300
Fax: +31 181 617 899

NORWAY

Jotun A/S
P.O. Box 2021,
3202 SANDEFJORD
Visiting address:
Hystadveien 167, 3209 Sandefjord
Tel: +47 33 45 70 00
Fax: +47 33 45 79 00

OMAN

Jotun Pakistan Co. LLC
Rusayl Ind. Estate, Road No.10
P.O. Box 672 Code 111, MUSCAT
Tel: +968 2444 6100
Fax: +968 2444 6105

PAKISTAN

Jotun Pakistan (Pvt.) Limited
Plot no. 2-H, Sector 5
Korangi Industrial Area, KARACHI
Tel: +92 213 5121 491-2
Fax: +92 213 5121 493

PHILIPPINES

Jotun (Philippines) Inc.
846 West Service Road, Km.18
South Super Highway
Paranaque City,
METRO MANILA 1714
Tel: +63 2239 1032-34
Fax: +63 2822 0760

POLAND

Jotun Polska Sp.zo.o.
ul. Magnacka 15,
80-180 GDAŃSK KOWALE
Tel: +48 58 555 1515
Fax: +48 58 781 9692

RUSSIA

Jotun Paints O.O.O.
Varshavskaya Str., 23/2, Office 53
196128 ST. PETERSBURG
Tel: +7 821 640 00 80
Fax: +7 821 640 00 81

SAUDI ARABIA

Jotun Saudia Co. Ltd.
Jeddah Industrial City, Phase 3,
P.O. Box 34698, JEDDAH 21478
Tel: +966 2635 0535 / 2636 1271
Fax: +966 2636 2483

SINGAPORE

Jotun (Singapore) Pte. Ltd.
37 Tuas View Crescent
Singapore 637236
Tel: +65 650 882 88
Fax: +65 6265 7484

SOUTH AFRICA

Jotun Paints South Africa (PTY) Ltd.
Wimbledon Road, P.O.Box 187
BLACKHEATH 7581
Tel: +27 21 905 1070
Fax: +27 21 905 1652

SPAIN

Jotun Iberica S.A.
Poligon Santa Rita,
Calle Estatica no. 3,
08755 Castellbisbal,
BARCELONA
Tel: +34 937 711 800
Fax: +34 937 711 801

SWEDEN

Jotun Sverige AB
P.O. Box 151, Klangfärgsgatan 13,
421 22 VÄSTRA FRÖLUNDA
Tel: +46 3169 6300
Fax: +46 3169 6397

THAILAND

Jotun Thailand Ltd
Amata Nakom Ind. Estate (BIPII)
700/353 Moo 6 Tumbol
Donhualoh, Amphur Muang
CHONBURI 2000
Tel: +66 38 214 824-6/214 347-51
Fax: +66 38 214 373/375

TURKEY

Jotun Boya San. ve Ticaret. A.S.
Hilpark Suites Sitesi No.10,
Istinye,
34460 Sariyer - ISTANBUL
Tel: +90 21 2279 7878
Fax: +90 21 2279 2549

U. A. E.

Abu Dhabi
Jotun Abu Dhabi (LLC)
P.O. Box 3714, Mussafah
ABU DHABI
Tel: +971 2691 0700
Fax: +971 2551 0232

Dubai

Jotun U.A.E. Ltd. (LLC)
P.O. Box 3671,
Al Quoz Industrial Area
DUBAI
Tel: +971 4339 5000
Fax: +971 4338 0666

USA

Jotun Paints, Inc.
9203 Highway 23, P.O. Box 159,
Belle Chasse, LA 70037
Tel: +1 800 229 3538 /
+1 504 394 3538
Fax: +1 504 394 3726

VIETNAM

Jotun Paints (Vietnam) Co. Ltd.
Song Than Industrial. Zone,
No.1 Street 10,
Di An District, Binh Duong Province
Tel: +84 650 3742206
Fax: +84 650 374 2205

YEMEN

Jotun Yemen Paints Co. Ltd
P.O. Box 70183, Al Alam
ADEN
Tel: +967 2820 546-9
Fax: +967 2249 362

Jotun A/S

P.O. Box 2021,
N-3202 Sandefjord, Norway
Tel: +47 33 45 70 00
jotun.com



Jotun Protects Property